

MODULE 3.1

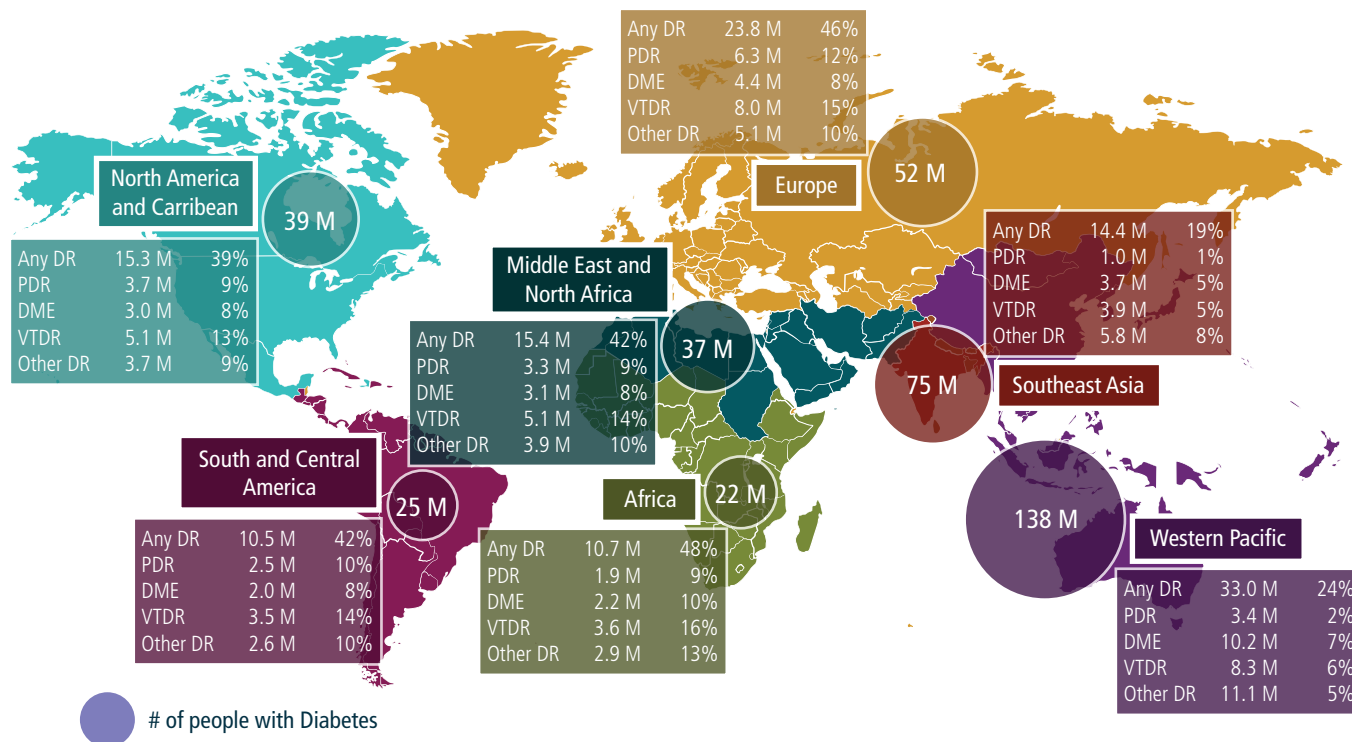
DR/DME Epidemiology

The rate of diabetes in the world is increasing dramatically, and the rate of diabetic retinopathy (DR) and diabetic macular edema (DME) is projected to rise accordingly.¹ The International Diabetes Foundation predicts 592 million people will have diabetes by 2035.²

The most common complication of diabetes is diabetic retinopathy (DR), which is also the most common cause of blindness among working-age populations in the Western world. Diabetes causes metabolic changes that eventually damage retinal microvasculature in the eye, leading to DR, and in some cases, diabetic macular edema (DME).^{3,4}

Despite advances in diabetes care, ocular complications persist. Proliferative DR and other complications develop in 20% of patients after 30 years, despite intensive glycemic control. DME is present in 25% of persons with diabetes and is the clinical feature most commonly associated with vision loss in diabetes.⁵

Diabetic Retinopathy & Diabetic Macular Edema

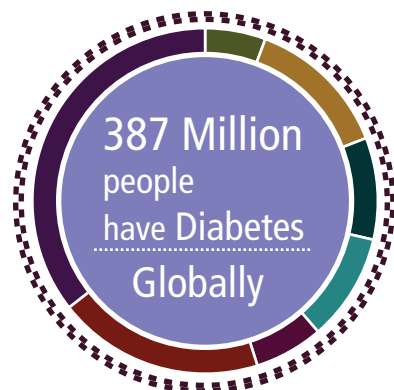


DR = Any Diabetic Retinopathy

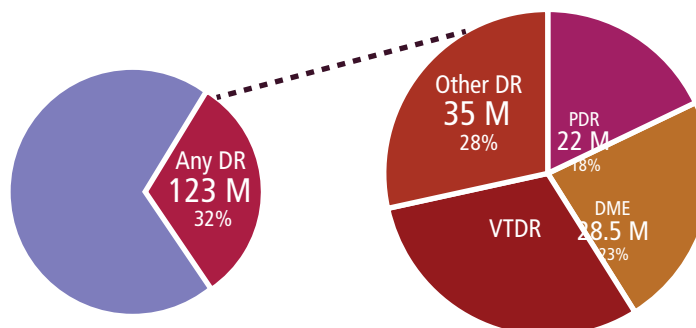
PDR = Proliferative Diabetic Retinopathy

DME = Diabetic Macular Edema

VTDR = Vision-Threatening Diabetic Retinopathy



Breakdown of Diabetic Retinopathy Population



	Diabetes		Any DR		PDR		DME		VTDR		Other DR	
Africa	22 M	6%	10.7 M	48%	1.9 M	9%	2.2 M	10%	3.6 M	16%	2.9 M	13%
Europe	52 M	13%	23.8 M	46%	6.3 M	12%	4.4 M	8%	8.0 M	15%	5.1 M	10%
Middle East and North Africa	37 M	10%	15.4 M	42%	3.3 M	9%	3.1 M	8%	5.1 M	14%	3.9 M	10%
North America and Caribbean	39 M	10%	15.3 M	39%	3.7 M	9%	3.0 M	8%	5.1 M	13%	3.7 M	9%
South and Central America	25 M	6%	10.5 M	42%	2.5 M	10%	2.0 M	8%	3.5 M	14%	2.6 M	10%
Southeast Asia	75 M	19%	14.4 M	19%	1.0 M	1%	3.7 M	5%	3.9 M	5%	5.8 M	8%
Western Pacific	138 M	36%	33.0 M	24%	3.4 M	2%	10.2 M	7%	8.3 M	6%	11.1 M	5%
World	387 M	100%	123.1M	32%	22.0 M	6%	28.5 M	7%	37.5 M	10%	35.0 M	9%

*Diabetes population estimates determined from the International Diabetes Federation. Diabetic retinopathy population estimates calculated as percentage of populations with diabetes.

References

1. Wild S, Roglic G, Green A, et al. Global prevalence of diabetes: estimates for the year 2000 and projections for 2030. *Diabetes Care*. 2004;27:1047-1053.
2. Guariguata L, Nolan T, Beagley J, et al. *IDF Diabetes Atlas*. 6th ed. Brussels, Belgium: International Diabetes Federation; 2013. http://www.idf.org/sites/default/files/EN_6E_Atlas_Full_0.pdf. Accessed October 16, 2015.
3. Congdon NG, Friedman DS, Lietman T. Important causes of visual impairment in the world today. *JAMA*. 2003;290: 2057-2060.
4. Fong DS, Aiello LP, Ferris FL III, et al. Diabetic retinopathy. *Diabetes Care*. 2004;27:2540-2553.
5. Antonetti DA, Klein R, Gardner TW. Diabetic retinopathy. *N Engl J Med*. 2012;366(13):1227-1239.

